



Literacy  
**Together**

**2022-2023**

# ANNUAL REPORT



TRANSFORMING LIVES AND COMMUNITIES  
THROUGH THE POWER OF LITERACY

**LIT-TOGETHER.ORG**



## ADULT LITERACY

**2,610 Hours | 57 Tutors | 55 Students**

Basic tutoring for adults at low literacy levels. With improvements in the ability to read, write, and do basic math, students gain the power to reach their educational goals, find sustainable employment, and better support themselves and their families.



## YOUTH LITERACY

**4,703 Hours | 94 Tutors | 111 Students**

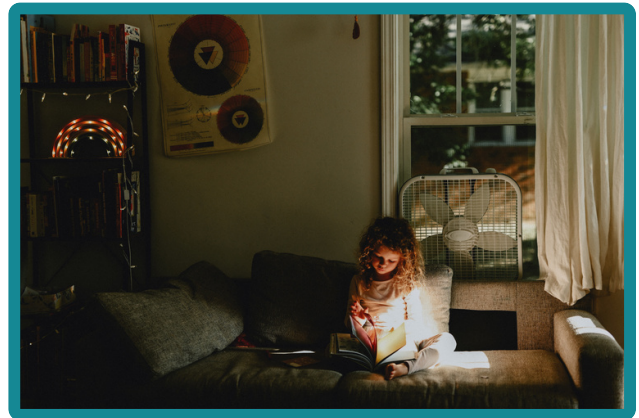
Intensive tutoring for youth in grades K to 5 who read below grade level and struggle to keep up with their peers. With support and encouragement, they gain the skills and confidence to achieve academic success and remain on the pathway to high school graduation and beyond.



## ENGLISH FOR SPEAKERS OF OTHER LANGUAGES

**12,429 Hours | 221 Tutors | 247 Students**

English language tutoring for adults. When immigrants learn to speak and read English, they can participate in school conferences with their children, improve employment opportunities, learn to navigate the health care system, and/or prepare for the citizenship exam.



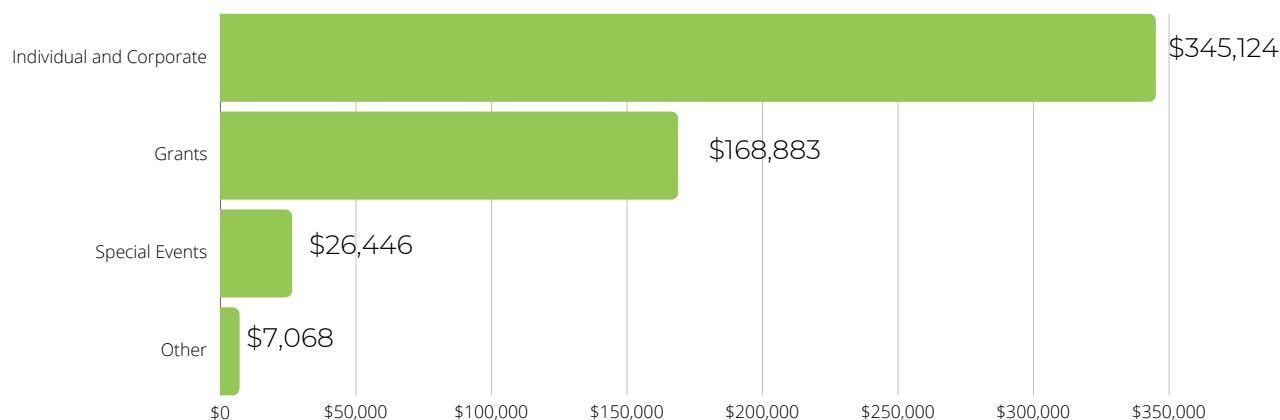
## DOLLY PARTON'S IMAGINATION LIBRARY®

**6,371 children under five received free books**

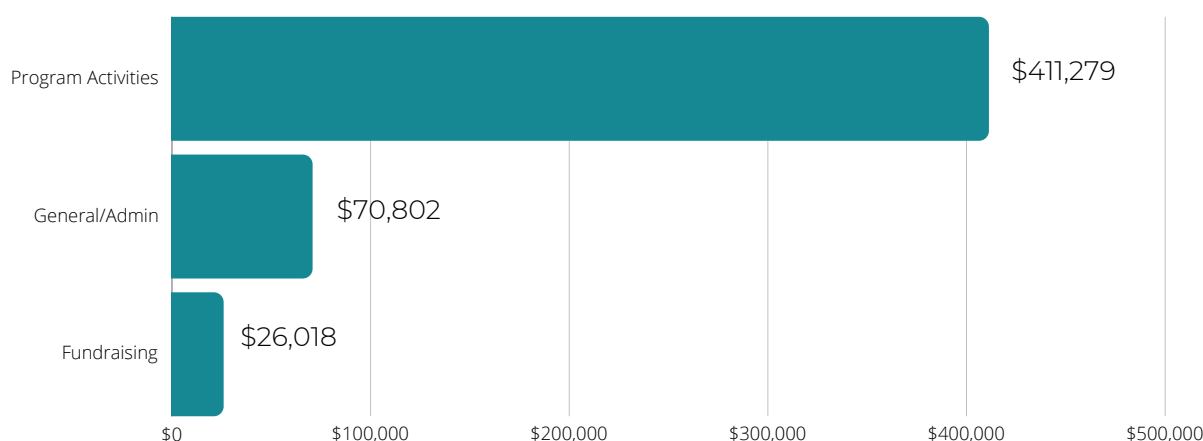
Free high-quality books mailed every month to children under the age of five to build a home library and ignite a love of reading.

**19,742 INSTRUCTIONAL HOURS  
372 TUTORS 413 STUDENTS  
TOTAL 6,784 SERVED**

## REVENUE



## EXPENSES



### OF NOTE:

Charity Navigator 100/100  
 Guidestar Platinum Seal of Transparency  
 Living Wage Certified  
 ProLiteracy member

## REVENUE

# \$547,521

Individual & Corporate \$345,124  
 Grants \$168,883  
 Special Events \$26,446  
 Other \$7,068  
**Total: \$547,521**

## EXPENSES

# \$508,099

Program Activities \$411,279  
 General/Admin \$70,802  
 Fundraising \$26,018  
**Total: \$508,099**

## CONTRIBUTED SERVICES

# \$582,703

**91.2% of expenses go directly to program services\***

*\*Includes the value of contributed services from volunteer tutors according to audited financial statements. The FY 2022/2023 audit is available online at [lit-together.org](http://lit-together.org)*

## MISSION

The mission of Literacy Together is to transform lives and communities through the power of literacy.

## VISION

Our vision is for a just and equitable community in which literacy is accessible and achievable by all.

## CORPORATE PARTNERS

ANGRY UNICORN ENTERTAINMENT  
 BILTMORE WINES  
 GROVE STONE & SAND  
 IMC INVESTMENTS, LLC  
 JESSE KITT PHOTOGRAPHY  
 LEWIS REAL ESTATE  
 MILLS MANUFACTURING  
 ROTARY CLUB OF ASHEVILLE  
 TD BANK  
 WATER STREET INVESTORS  
 WLOS/WMYA

## FUNDERS

BEATTIE FOUNDATION  
 BUNCOMBE COUNTY  
 CITY OF ASHEVILLE  
 COMMUNITY FOUNDATION OF WNC  
 DOGWOOD HEALTH TRUST  
 DOLLAR GENERAL LITERACY FOUNDATION  
 GLASS FOUNDATION  
 HENRI LANDWIRTH FAMILY FUND  
 NORTH CAROLINA COMMUNITY COLLEGE SYSTEM  
 PISGAH INVESTMENTS FOUNDATION.  
 PROLITERACY FOUNDATION  
 SISTERS OF MERCY OF NC  
 TD CHARITABLE FOUNDATION  
 UNITED WAY

## PROGRAM PARTNERS

AB TECH  
 ASHEVILLE CITY & BUNCOMBE COUNTY SCHOOLS  
 BUNCOMBE PARTNERSHIP FOR CHILDREN  
 CHRISTINE W. AVERY LEARNING CENTER (CWA)  
 GOODWILL INDUSTRIES  
 STEPHENS-LEE RECREATION CENTER  
 YMCA'S HORIZONS PROGRAM  
 YOUTH TRANSFORMED FOR LIFE (YTL)

*Thank you to the  
 many individual  
 donors that give  
 throughout the year.*

## THE TEAM

### BOARD OF DIRECTORS

Zurilma Anuel  
 Marilyn Cortes (Chair)  
 Ben Fehsenfeld (Treasurer)  
 Joselyne Gago  
 Sarah Gransee  
 Page McCorkle  
 Gabby Mendez  
 Debbie Motz Bryenton (Vice Chair)  
 Susan Perone (Secretary)  
 Becky Stone  
 Nora van Arkel

### STAFF

Cindy Threlkeld, *Executive Director*  
 Erin Sebelius, *ESOL Senior Program Director*  
 Meghan Pennock, *ESOL Associate*  
 Irina Khasanova, *ESOL Specialist/Office Manager*  
 Rebecca Massey, *Adult Literacy Program Director*  
 Julie Taylor, *Youth Literacy Program Director*  
 Tiffany Grimme, *Youth Literacy Program Assistant*  
 Laura Bernhein, *Outreach & Communications Director*  
 LuAnn Arena, *Development Director*